



GAT MONTHLY MEMBERSHIP PROGRESS REPORT

Results as of: 12/31/2022

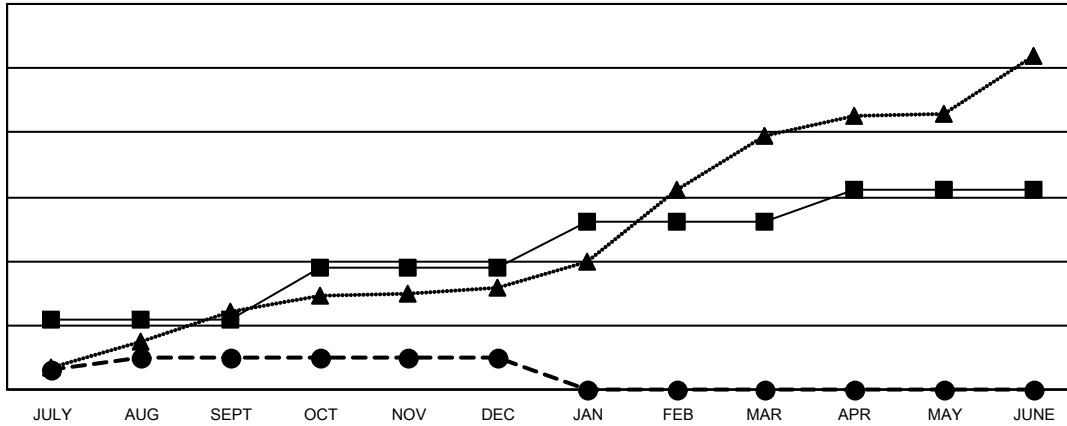
Multiple District 3233

LOCATION: INDIA

Clubs			
RESULTS FOR 2022-2023			
QUARTER	NEW CLUB GOAL	NEW CLUBS	DROPPED CLUBS
JULY/AUG/SEPT	22	10	12
OCT/NOV/DEC	16	0	63
JAN/FEB/MAR	14	0	0
APR/MAY/JUNE	10	0	0

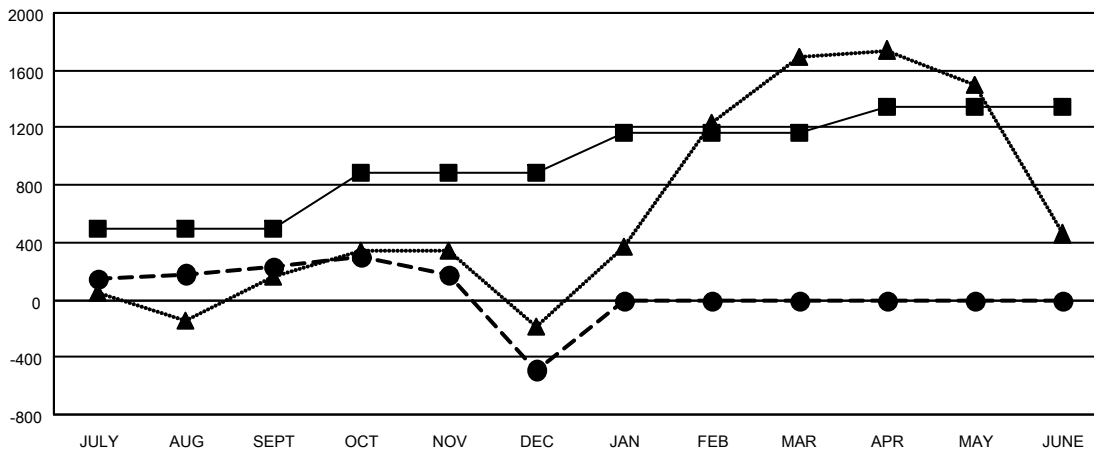
Members			
RESULTS FOR 2022-2023			
QUARTER	MEMBER GROWTH NET GOAL	MEMBER GROWTH ACTUAL	DROPPED MEMBERS ACTUAL (including transfers)
JULY/AUG/SEPT	495	989	638
OCT/NOV/DEC	395	416	1,094
JAN/FEB/MAR	280	0	0
APR/MAY/JUNE	180	0	0

GOALS AND ACTUAL NEW CLUBS CUMULATIVE



- - CURRENT YEAR GOALS FOR NEW CLUBS
- - CURRENT YEAR ACTUAL NEW CLUBS
- ▲ - LAST YEAR ACTUAL NEW CLUBS

GOALS AND ACTUAL MEMBERS CUMULATIVE



- - MEMBER GROWTH NET GOAL
- - MEMBER GROWTH ACTUAL
- ▲ - LAST YEAR MEMBERSHIP ACTUAL

DROPPED CLUBS: 75	
DROPPED MEMBERS	
DECEASED	25
CLUB CANCELLED	602
OTHER	1,105
TOTAL	1,732

247 CLUBS OF 861 ADDED 1 OR MORE NEW MEMBERS

[CLICK HERE FOR CUMULATIVE MEMBERSHIP DATA](#)

GENDER DISTRIBUTION	
MALE	13,729 (67.43%)
FEMALE	6,616 (32.49%)
NON BINARY	1 (0.00%)
PREFER NOT TO ANSWER	15 (0.07%)
TOTAL FAMILY UNIT MEMBERS	9,791
FAMILY MEMBERS PAYING HALF DUES	5,719